

E 584,000 E 585,000 E 586,000 E 587,000 E 588,000 E 589,000

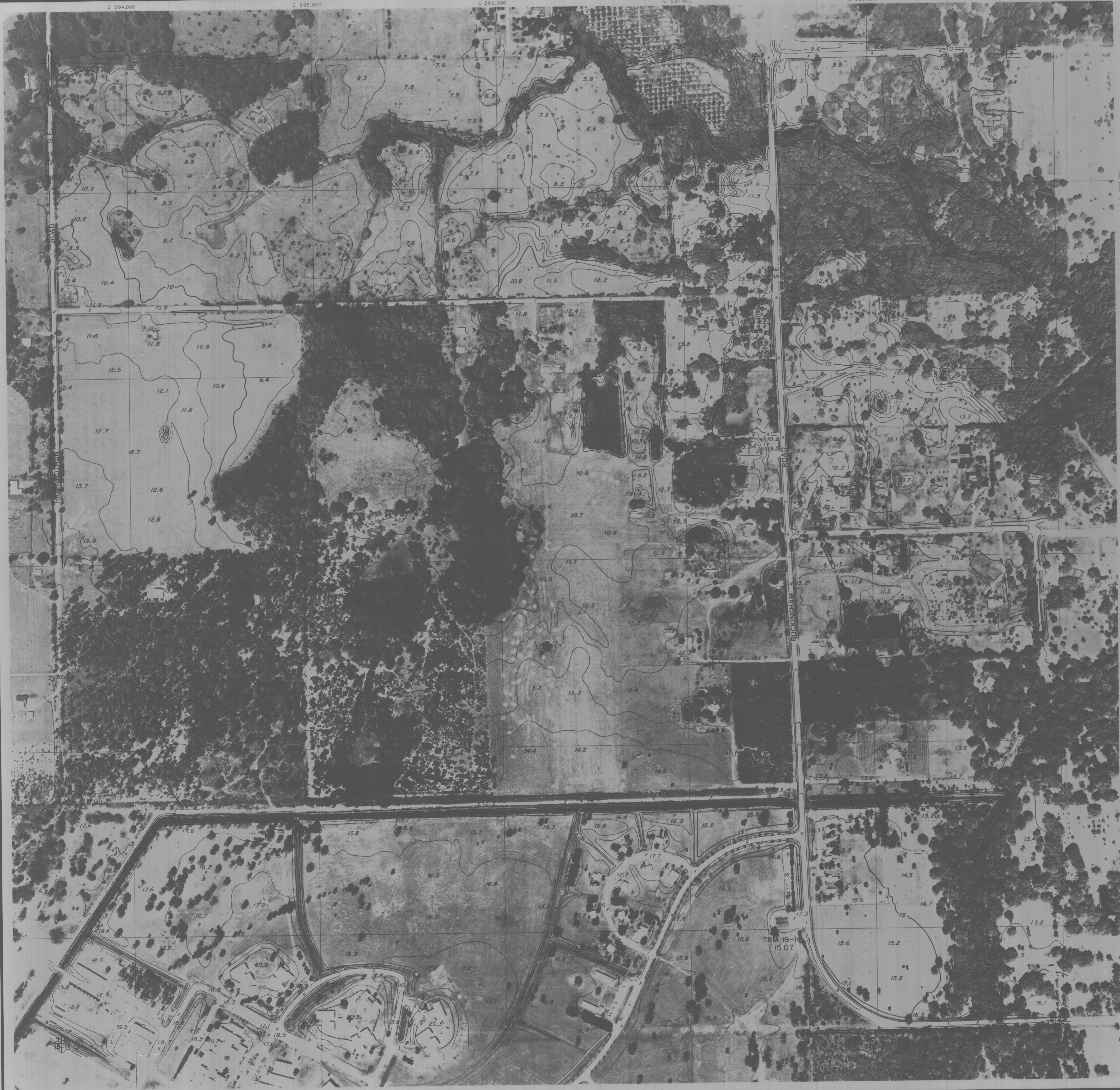
COMPILED BY PHOTOGRAMMETRIC SURVEY BY

WOOLPERT CONSULTANTS
DAYTON & CINCINNATI, OHIO CHARLOTTE, NORTH CAROLINA
MOBILE, ALABAMA ORLANDO & PENSACOLA, FLORIDA

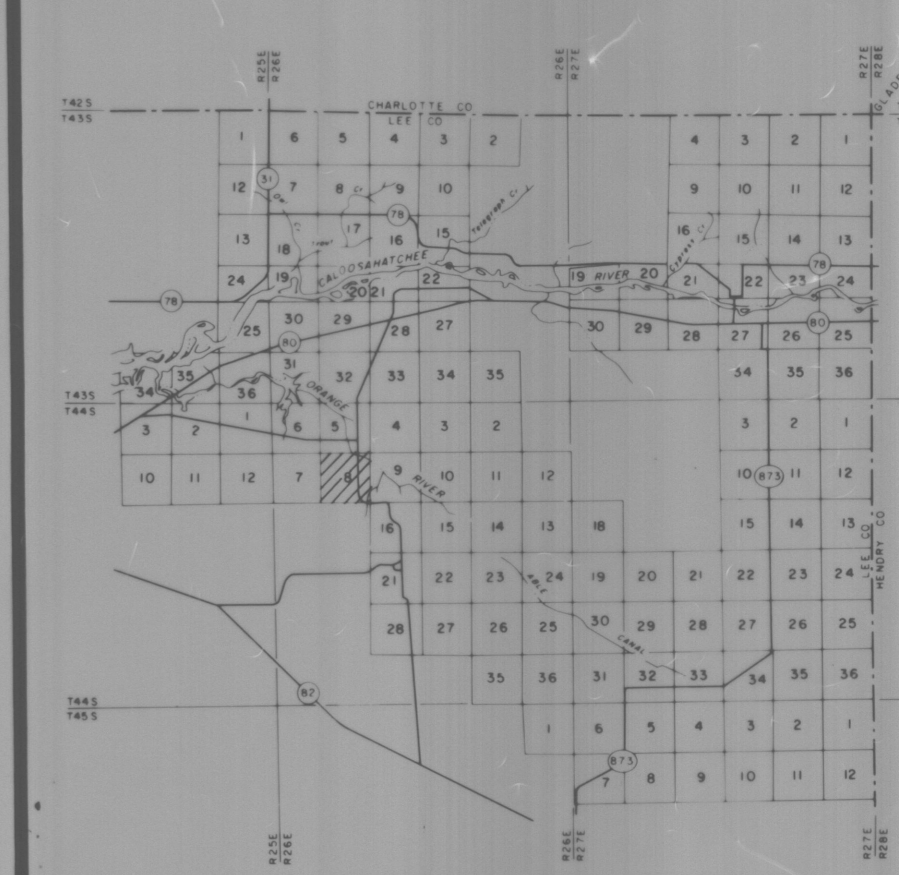
GEODETIC CONTROL SURVEY
BY
Deni Associates
FT. MYERS, FLORIDA

LEGEND

- HORIZONTAL CONTROL U.S.C.&G.S. △
- FLORIDA STATE DEPT. OF TRANSPORTATION ○
- TRAVERSE STATIONS ○
- VERTICAL CONTROLS ○ TBM-7
10
15
20
- SECTION CORNERS ○
- CONTOURS ⋯
- DEPRESSION CONTOURS ⋯
- SPOT ELEVATIONS 50.4
- STATE ROUTE ○
- U.S. ROUTE ○
- INTERSTATE HIGHWAY ○
- POLITICAL BOUNDARIES ○



KEY MAP



NOTE:

ACCURACY: THIS MAPPING IS INTENDED TO COMPLY WITH NATIONAL MAP ACCURACY STANDARDS. HOWEVER, SUCH ACCURACY, OR ANY OTHER LEVEL OF ACCURACY, IS NOT GUARANTEED BY LEE COUNTY, FLORIDA.

THE LAND LINE INFORMATION SHOWN IS COMPILED FROM THE BEST AVAILABLE DATA AND DOES NOT NECESSARILY REPRESENT TRUE LAND LINE LOCATION.

DASHED CONTOURS AND UNDERLINED ELEVATIONS INDICATE STANDARD VERTICAL ACCURACY REDUCED BY TREE COVER.

THIS SHEET MAY NOT BE REPRODUCED, IN PART OR IN FULL, WITHOUT SPECIFIC APPROVAL OF THE DIVISION OF LAND INFORMATION SYSTEMS, LEE COUNTY, LEE COUNTY COURTHOUSE, 215 SECOND STREET, FT. MYERS, FLORIDA.

COPYRIGHT BY LEE COUNTY, FLORIDA. ALL RIGHTS RESERVED.

GRIDS BASED ON THE FLORIDA STATE PLANE COORDINATE SYSTEM, WEST ZONE.

ELEVATIONS BASED ON U.S.C.&G.S. DATUM.



SCALE 1" = 200' CONTOUR INTERVAL 1'
DATE OF BASE PHOTOGRAPHY MARCH/APRIL 1988
DATE OF MAPPING PHOTOGRAPHY APRIL 1988

LEE COUNTY
FT. MYERS, FLORIDA

LAND INFORMATION SYSTEMS

SECTION 8 TOWNSHIP 44 SOUTH RANGE 26 EAST

DRAWING NUMBER	SHEET OF
----------------	----------

Handwritten signature or initials