

E 579,000 E 580,000 E 581,000 E 582,000 E 583,000

COMPILED BY PHOTOGRAMMETRIC METHODS

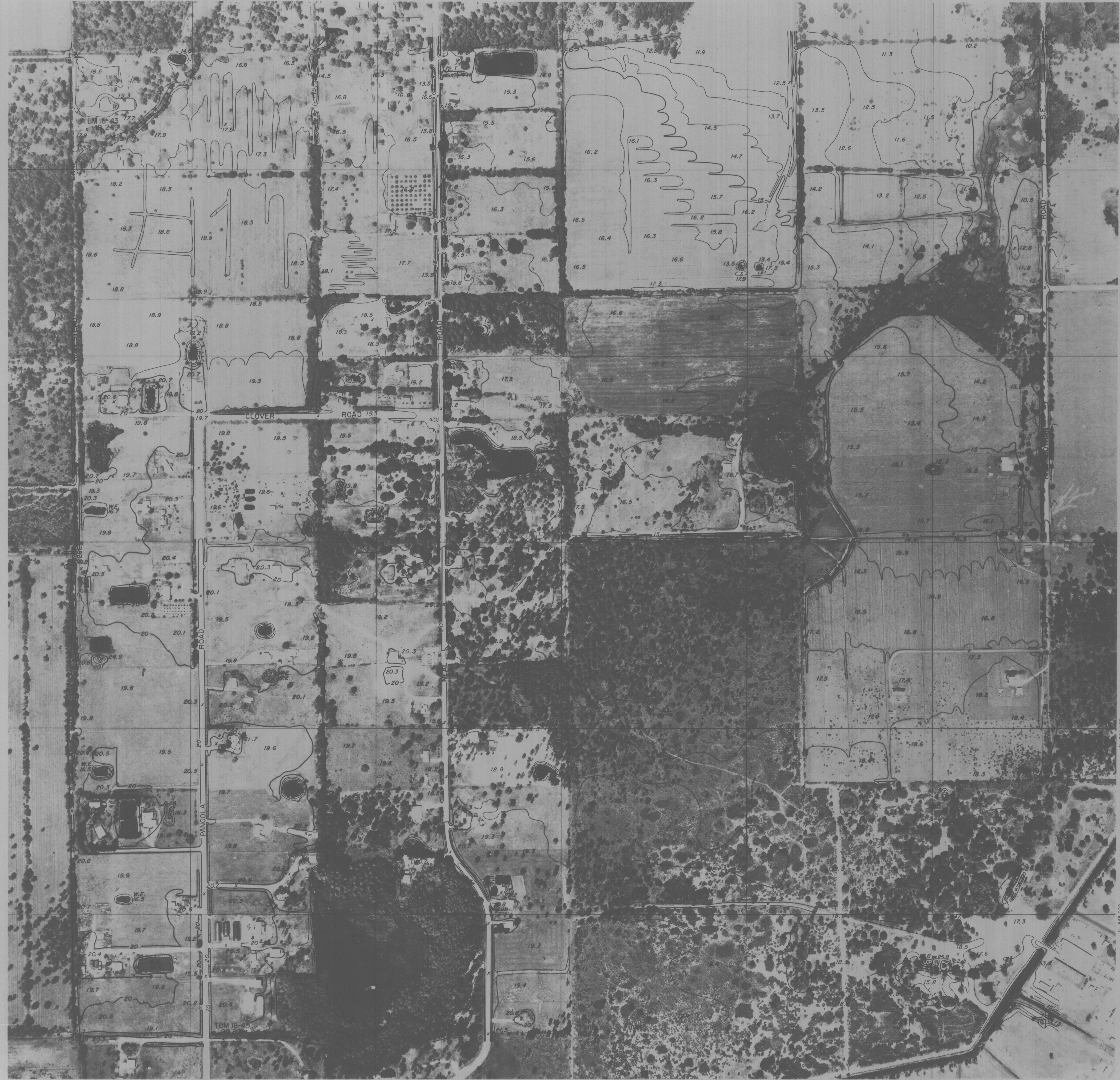
**WOOLPERT CONSULTANT**  
DAYTON & CINCINNATI, OHIO CHARLOTTE, NORTH CAROLINA  
MOBILE, ALABAMA ORLANDO & PENSACOLA, FLORIDA

GEODETIC CONTROL SURVEY BY

**Deni Associates**  
FT. MYERS, FLORIDA

LEGEND

- HORIZONTAL CONTROL U.S.C. & G.S. △
- FLORIDA STATE DEPT. OF TRANSPORTATION ○
- TRAVERSE STATIONS ○
- VERTICAL CONTROLS ○
- SECTION CORNERS ○
- CONTOURS —
- DEPRESSION CONTOURS - - -
- SPOT ELEVATIONS ○
- STATE ROUTE —
- U.S. ROUTE —
- INTERSTATE HIGHWAY —
- POLITICAL BOUNDARIES —



KEY MAP



NOTE:

ACCURACY: THIS MAPPING IS INTENDED TO COMPLY WITH NATIONAL MAP ACCURACY STANDARDS. HOWEVER, SUCH ACCURACY OR ANY OTHER LEVEL OF ACCURACY IS NOT GUARANTEED BY LEE COUNTY, FLORIDA.

THE LAND LINE INFORMATION SHOWN IS COMPILED FROM THE BEST AVAILABLE DATA AND DOES NOT NECESSARILY REPRESENT TRUE LAND LINE LOCATION.

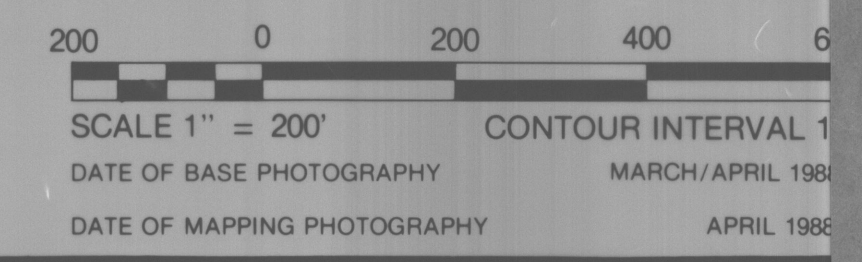
DASHED CONTOURS AND UNDERLINED ELEVATIONS INDICATE STANDARD VERTICAL ACCURACY REDUCED BY TREE COVER.

THIS SHEET MAY NOT BE REPRODUCED, IN PART OR IN FULL, WITHOUT SPECIFIC APPROVAL OF THE DIVISION OF LAND INFORMATION SYSTEMS, LEE COUNTY, LEE COUNTY COURTHOUSE, 215 SECOND STREET, FT. MYERS, FLORIDA.

COPYRIGHT BY LEE COUNTY, FLORIDA. ALL RIGHTS RESERVED.

GRID: BASED ON THE FLORIDA STATE PLANE COORDINATE SYSTEM, WEST ZONE.

ELEVATIONS BASED ON U.S.C. & G.S. DATUM.



LEE COUNTY  
FT. MYERS, FLORIDA

**LAND INFORMATION SYSTEMS**

SECTION 7 TOWNSHIP 44 SOUTH RANGE 26 E  
DRAWING NUMBER SHEET OF

1-44-26