

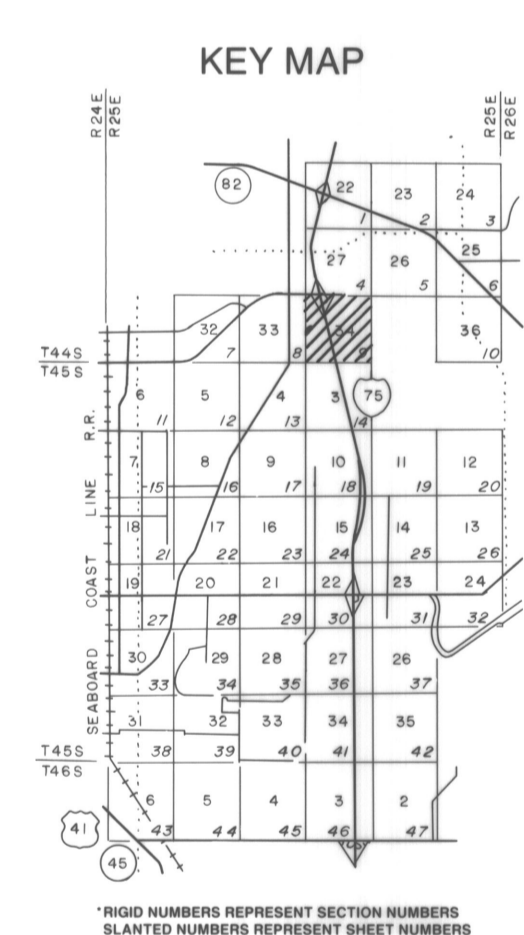


COMPILED BY PHOTOGRAMMETRIC METHODS BY
W **GEOGRAPHIC INFORMATION SERVICES**
 WOOLPERT

GEODETIC CONTROL SURVEY BY
D **Dent Associates**
 FT MYERS, FLORIDA

LEGEND

- HORIZONTAL CONTROL U.S.C. & G.S. △
- FLORIDA STATE DEPT. OF TRANSPORTATION ○
- TRAVERSE STATIONS ○
- VERTICAL CONTROLS ○
- SECTION CORNERS ○
- CONTOURS —
- DEPRESSION CONTOURS - - -
- SPOT ELEVATIONS x
- STATE ROUTE ○
- U.S. ROUTE ○
- INTERSTATE HIGHWAY ○
- POLITICAL BOUNDARIES - - -



NOTE:

ACCURACY: THIS MAPPING IS INTENDED TO COMPLY WITH NATIONAL MAP ACCURACY STANDARDS. HOWEVER, SUCH ACCURACY, OR ANY OTHER LEVEL OF ACCURACY, IS NOT GUARANTEED BY LEE COUNTY, FLORIDA.

THE LAND LINE INFORMATION SHOWN IS COMPILED FROM THE BEST AVAILABLE DATA AND DOES NOT NECESSARILY REPRESENT THE LAND LINE LOCATION.

CONTOUR LINES ARE DIGITALLY COMPILED BY PHOTOGRAMMETRIC METHODS TO NATIONAL MAP ACCURACY STANDARDS. HOWEVER, THEY DO NOT NECESSARILY FIT THE HORIZONTAL POSITION OF THE PHOTOGRAPHIC IMAGE DUE TO RELIEF DISPLACEMENT.

DASHED CONTOURS AND UNDERLINED ELEVATIONS INDICATE STANDARD VERTICAL ACCURACY REDUCED BY TREE COVER.

THIS SHEET MAY NOT BE REPRODUCED, IN PART OR IN FULL, WITHOUT SPECIFIC APPROVAL OF THE DIVISION OF LAND INFORMATION SYSTEMS, LEE COUNTY.

L. S. DIV.
 1609 HEITMAN ST.
 FT. MYERS, FLORIDA
 ALL RIGHTS RESERVED

GRIDS BASED ON THE FLORIDA STATE PLANE COORDINATE SYSTEM, NAD, 1983
 ELEVATIONS BASED ON U.S.C. & G.S. DATUM.

200 0 200 400 600
 SCALE 1" = 200' CONTOUR INTERVAL 10'
 DATE OF BASE PHOTOGRAPHY JULY 1989
 DATE OF MAPPING PHOTOGRAPHY JUNE 1989

LEE COUNTY
 FT. MYERS, FLORIDA

**SIX MILE CYPRESS / TEN MILE BASIN
 LAND INFORMATION SYSTEMS**

SECTION 34 TOWNSHIP 44 SOUTH RANGE 25 E
 DRAWING NUMBER 9 SHEET OF

34-44-25