



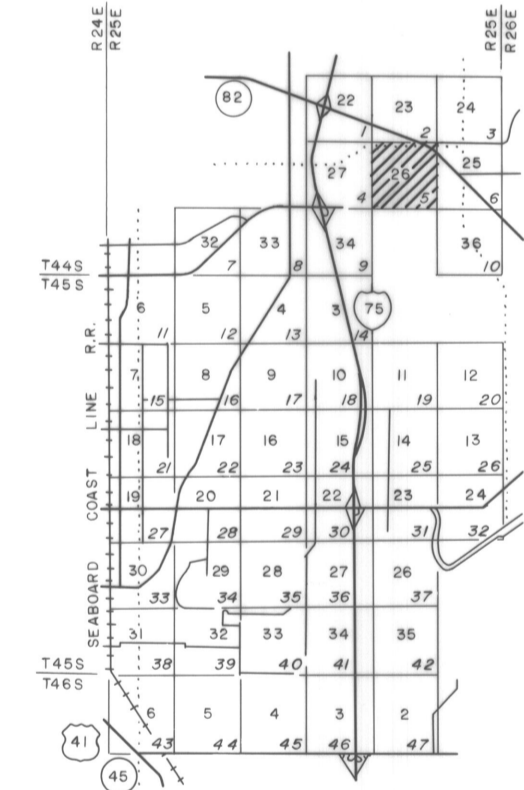
COMPILED BY PHOTOGRAMMETRIC METHODS BY GEOLOGIC CONTROL SURVEY BY



LEGEND

- HORIZONTAL CONTROL U.S.C. & G.S. △
- FLORIDA STATE DEPT. OF TRANSPORTATION ○
- TRAVERSE STATIONS ○
- VERTICAL CONTROLS ○
- SECTION CORNERS ○
- CONTOURS —
- DEPRESSION CONTOURS - - -
- SPOT ELEVATIONS 19.5
- STATE ROUTE (82)
- U.S. ROUTE —
- INTERSTATE HIGHWAY —
- POLITICAL BOUNDARIES - - -

KEY MAP



NOTE:

ACCURACY: THIS MAPPING IS INTENDED TO COMPLY WITH NATIONAL MAP ACCURACY STANDARDS. HOWEVER, SUCH ACCURACY, OR ANY OTHER LEVEL OF ACCURACY, IS NOT GUARANTEED BY LEE COUNTY, FLORIDA.

THE LAND LINE INFORMATION SHOWN IS COMPILED FROM THE BEST AVAILABLE DATA AND DOES NOT NECESSARILY REPRESENT THE LAND LINE LOCATION.

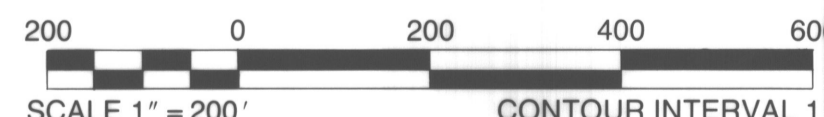
CONTOUR LINES ARE DIGITALLY COMPILED BY PHOTOGRAMMETRIC METHODS TO NATIONAL MAP ACCURACY STANDARDS. HOWEVER, THEY DO NOT NECESSARILY FIT THE HORIZONTAL POSITION OF THE PHOTOGRAPHIC IMAGE DUE TO RELIEF DISPLACEMENT.

DASHED CONTOURS AND UNDERLINED ELEVATIONS INDICATE STANDARD VERTICAL ACCURACY REDUCED BY TREE COVER.

THIS SHEET MAY NOT BE REPRODUCED, IN PART OR IN FULL, WITHOUT SPECIFIC APPROVAL OF THE DIVISION OF LAND INFORMATION SYSTEMS, LEE COUNTY.

L. S. DIV.
1609 HEITMAN ST.
FT. MYERS, FLORIDA
ALL RIGHTS RESERVED

COPYRIGHTED BY LEE COUNTY, FLORIDA.
GRIDS BASED ON THE FLORIDA STATE PLANE COORDINATE SYSTEM, NAD, 1983.
ELEVATIONS BASED ON U.S.C. & G.S. DATUM.



DATE OF BASE PHOTOGRAPHY JULY 1988
DATE OF MAPPING PHOTOGRAPHY JUNE 1988

LEE COUNTY
FT. MYERS, FLORIDA

**SIX MILE CYPRESS / TEN MILE BASIN
LAND INFORMATION SYSTEMS**

SECTION 26 TOWNSHIP 44 SOUTH RANGE 25 EAST

DRAWING NUMBER SHEET 5 OF 4

26-44-25