

N 827,000

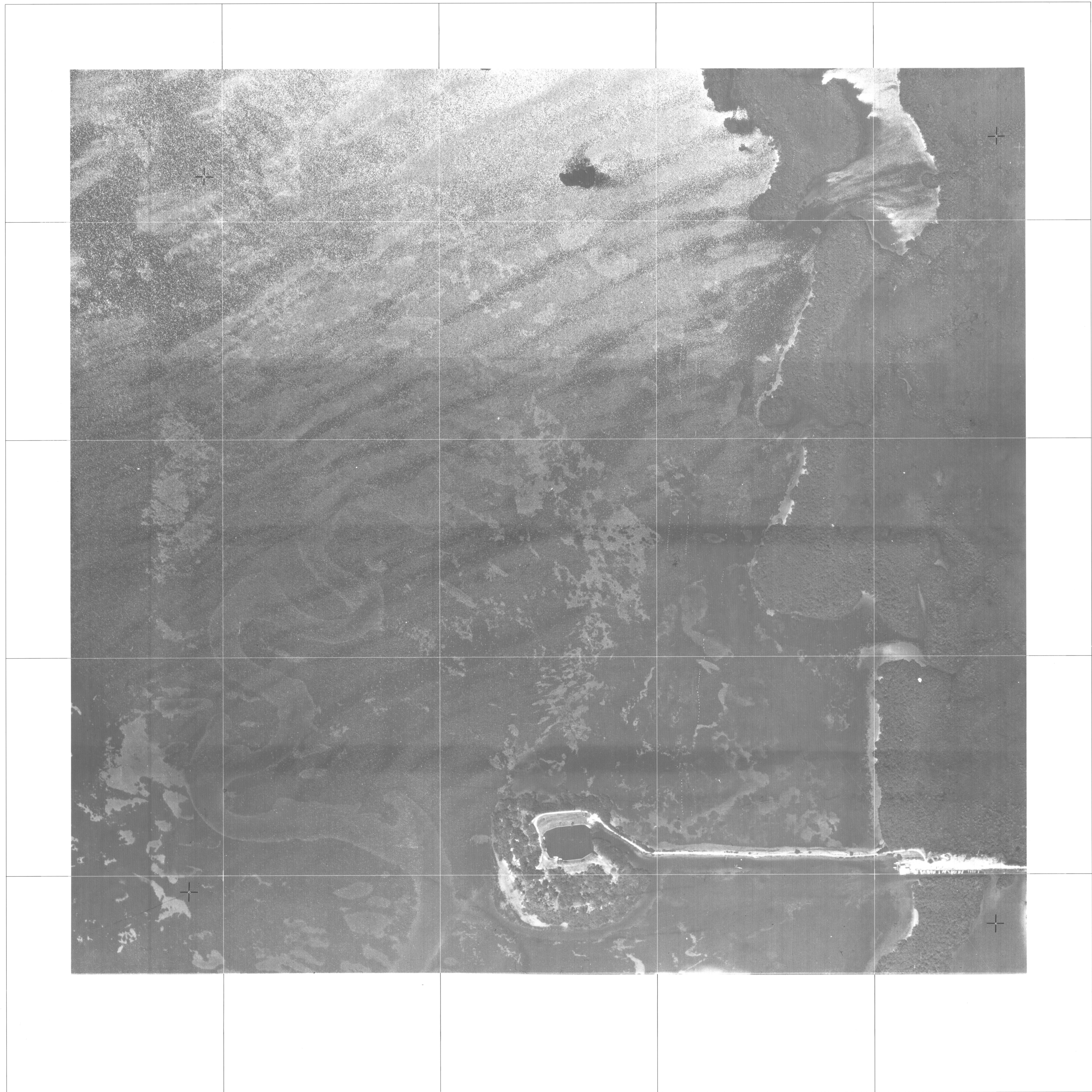
N 825,500

N 824,000

N 822,500

N 821,000

N 819,500



E 462,500 E 454,000 E 455,500 E 457,000 E 458,500 E 460,000

E 460,000

N 827,000



LEGEND

HORIZONTAL CONTROL U.S.C. & G.S.  
FLORIDA D.O.T. CONTROL  
ESTABLISHED SECTION CORNER  
GEODETIC CONTROL BY DENI ASSOC.  
SECTION CORNER (APPROX. LOCATION)



36	31	32	33	34	35	36	31
1	6	5	4	3	2	1	6
12	7	8	9	10	11	12	7
13	18	17	16	15	14	13	18
24	19	20	21	22	23	24	19
25	30	29	28	27	26	25	30
36	31	32	33	34	35	36	31
1	6	5	4	3	2	1	6

KEY MAP



NOTE:

ACCURACY: IT IS INTENDED THAT THIS MAPPING COMPLY WITH U.S. NATIONAL MAP ACCURACY STANDARDS. HOWEVER, SUCH ACCURACY OR ANY OTHER LEVEL OF ACCURACY IS NOT GUARANTEED BY LEE COUNTY, FLORIDA.

LAND LINE INFORMATION SHOWN HERE ON IS COMPILED FROM THE BEST AVAILABLE DATA AND DOES NOT NECESSARILY REPRESENT TRUE LAND LINE LOCATION.

GRIDS BASED ON FLORIDA STATE PLANE COORDINATE SYSTEM, WEST ZONE.

0 300 600 900  
scale feet  
SCALE 1" = 300'



County of Lee  
DEPARTMENT OF INFORMATION SERVICES  
FORT MYERS, FLORIDA

SEC. 32-T44S - R 22 E

DATE OF PHOTOGRAPHY MARCH/1984  
DATE OF PHOTOGRAPHY MARCH/1984

32 44 22