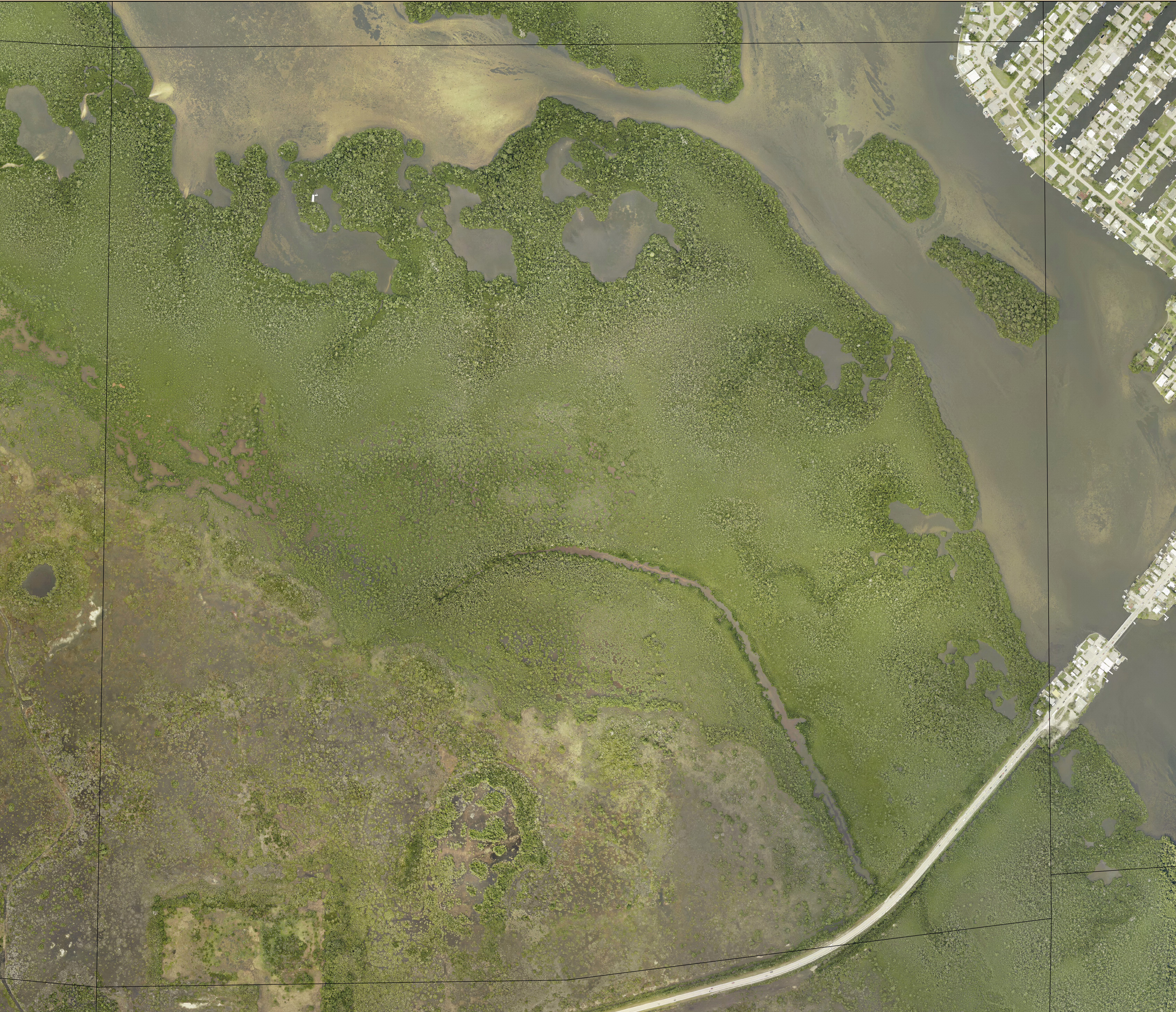


S23-T44-R22 2016 Aerial



MAP DISCLAIMER:
Maps and documents made available by the Lee County Property Appraiser's Office are created as part of a Geographic Information System (GIS) that compiles records, information, and data from various departments, cities, county, state and federal sources. Users are encouraged to examine the documentation or metadata associated with the data on which this map is based for information related to its accuracy, currency, and limitations.

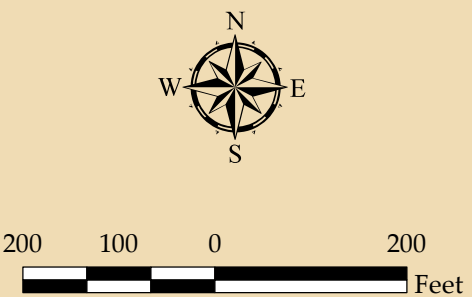
Source: Lee County Property Appraiser
Lee County BOCC
Pictometry

Aerial Date: January, 2016

Map Date: February 12, 2018

Prepared By: Walter Idlette

File Location: G:\ArcMapMXD\2018\S23-T44-R22 2016 Aerial_36x36.mxd
G:\StockMaps\StockMapsPDF\2018\S23-T44-R22 2016 Aerial_36x36.pdf



Map Scale: 1 inch = 200 feet for Plot Size: 36" x 36"