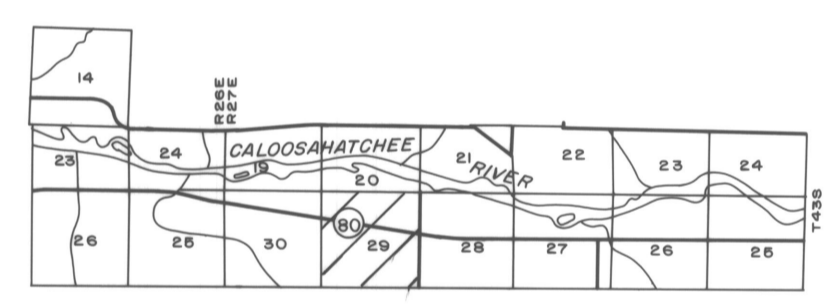
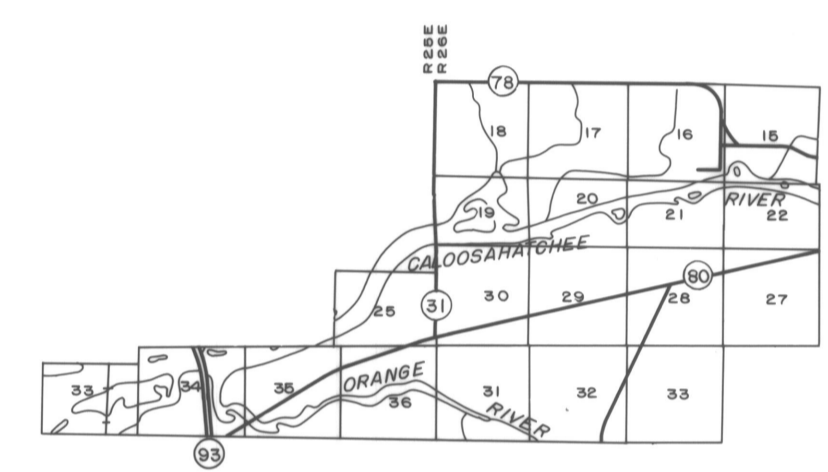




LEGEND

HORIZONTAL CONTROL U.S.C.&G.S.	△
TRAVERSE STATIONS	4-5-2 ○
VERTICAL CONTROLS	9.13 X
SECTION CORNERS	2   1 11   12
CONTOURS	5 10 15
DEPRESSION CONTOURS	15
SPOT ELEVATIONS	12.5
T. B. M.	TBM X 7.2



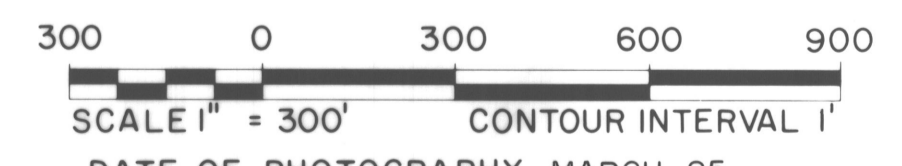
**NOTE** ACCURACY: IT IS INTENDED THAT THIS MAPPING COMPLY WITH U.S. NATIONAL MAP ACCURACY STANDARDS. HOWEVER, SUCH ACCURACY OR ANY OTHER LEVEL OF ACCURACY IS NOT GUARANTEED BY LEE COUNTY, FLORIDA.

THE LAND LINE INFORMATION SHOWN HERE ON IS COMPILED FROM THE BEST AVAILABLE DATA AND DOES NOT NECESSARILY REPRESENT TRUE LAND LINE LOCATION.

DASHED CONTOURS AND UNDERLINED ELEVATIONS INDICATE STANDARD VERTICAL ACCURACY REDUCED BY HEAVY FOLIAGE COVER.

GRIDS BASED ON FLORIDA STATE PLANE COORDINATE SYSTEM WEST ZONE.

ELEVATIONS BASED ON U.S.C.&G.S. DATUM.



DATE OF PHOTOGRAPHY MARCH 85  
 DATE OF MAPPING MARCH 85

**LEE COUNTY**  
**FLORIDA**

SECTION 29 T 43 S R 27 E

29-43-27