







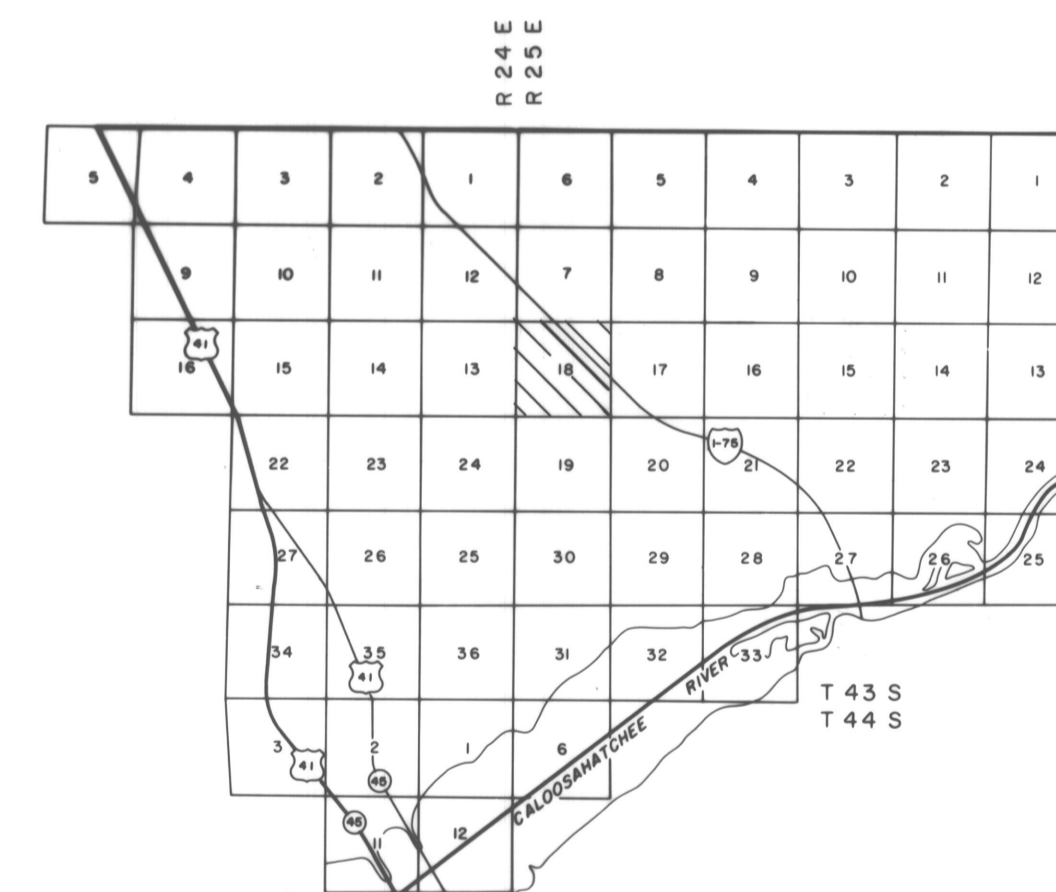
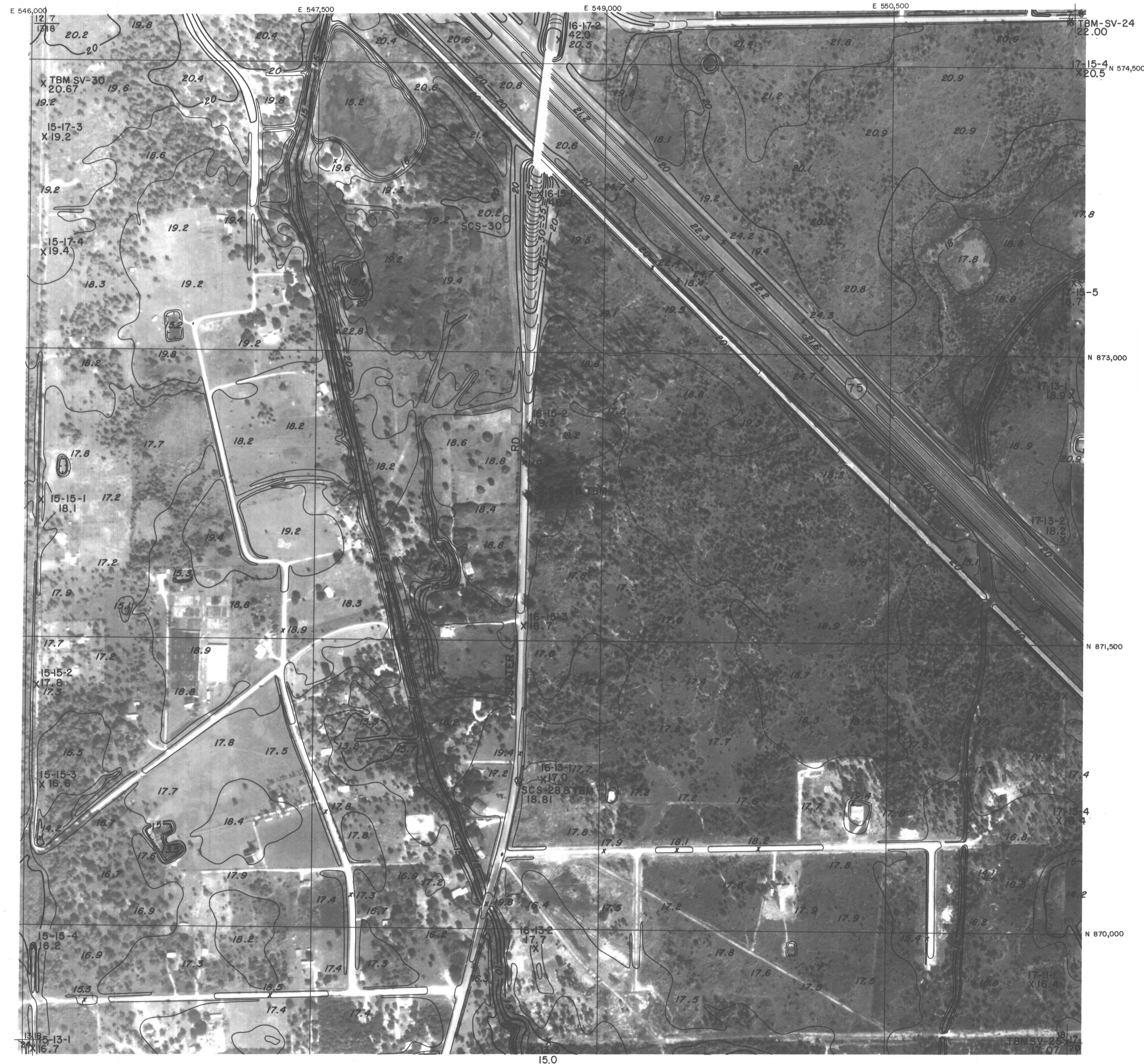
COMPILED BY PHOTOGRAMMETRIC METHODS

BY
HAMRICK • Aerial Surveys, Inc.



LEGEND

- HORIZONTAL CONTROL U.S.C.&G.S. 
- TRAVERSE STATIONS 4-5-2 
- VERTICAL CONTROLS 9.13 X 
- SECTION CORNERS 
- CONTOURS 
- DEPRESSION CONTOURS 
- SPOT ELEVATIONS 
- T. B. M. TBM X 



NOTE ACCURACY - IT IS INTENDED THAT THIS MAPPING COMPLY WITH U.S. NATIONAL MAP ACCURACY STANDARDS. HOWEVER, SUCH ACCURACY OR ANY OTHER LEVEL OF ACCURACY IS NOT GUARANTEED BY LEE COUNTY, FLORIDA.



THE LAND LINE INFORMATION SHOWN HERE ON IS COMPILED FROM THE BEST AVAILABLE DATA AND DOES NOT NECESSARILY REPRESENT TRUE LAND LINE LOCATION.

DASHED CONTOURS AND UNDERLINED ELEVATIONS INDICATE STANDARD VERTICAL ACCURACY REDUCED BY HEAVY FOLIAGE COVER.

GRIDS BASED ON FLORIDA STATE PLANE COORDINATE SYSTEM WEST ZONE.

ELEVATIONS BASED ON U.S.C.&G.S. DATUM.

300 0 300 600 900

SCALE 1" = 300' CONTOUR INTERVAL 1'

DATE OF PHOTOGRAPHY NOV 80
DATE OF MAPPING FEB 81

U. S. D. A.
SOIL CONSERVATION SERVICE

SECTION 18 T 43 S R 25 E

18-43-25