

COMPILED BY PHOTOGRAMMETRIC METHODS

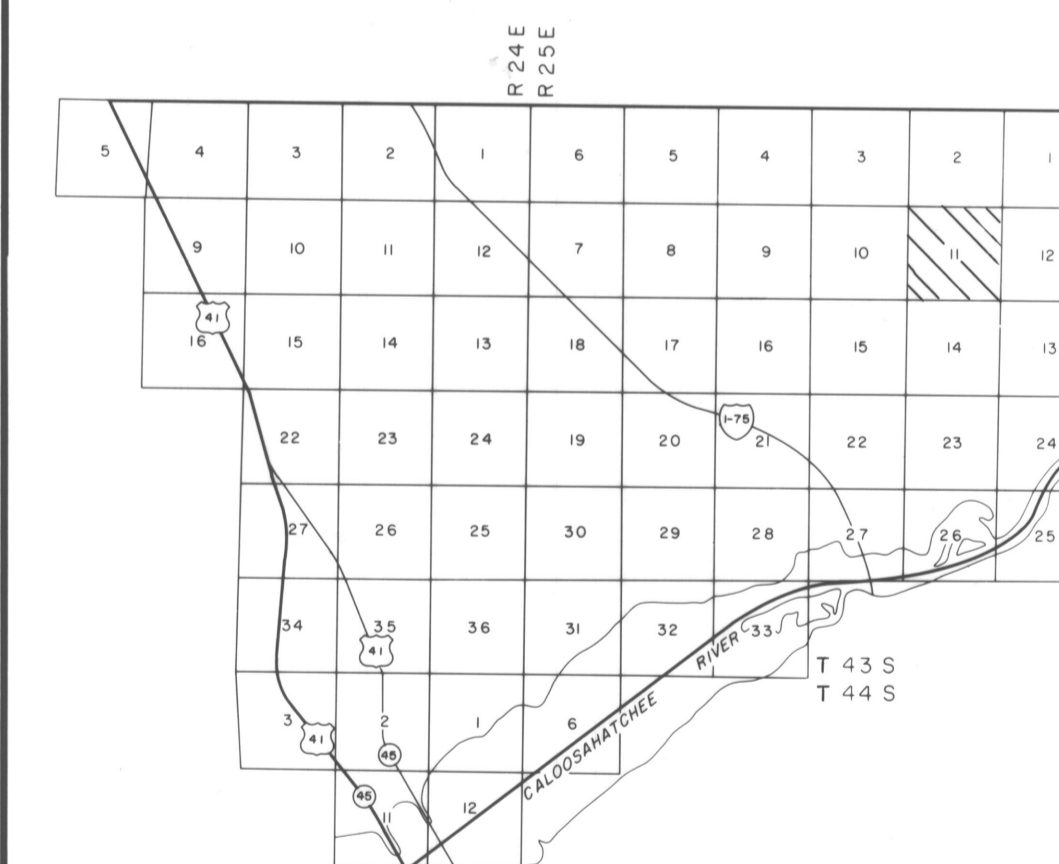
BY
HAMRICK • Aerial Surveys, Inc.



CLEARWATER FLORIDA

LEGEND

HORIZONTAL CONTROL U.S.C.&G.S.	△
TRAVERSE STATIONS	4-5-2 ○
VERTICAL CONTROLS	9.13 X
SECTION CORNERS	$\frac{2}{11} \frac{1}{12}$
CONTOURS	$\frac{5}{10}$
DEPRESSION CONTOURS	$\frac{15}{10}$
SPOT ELEVATIONS	12.5
T. B. M.	TBM X 7.2



NOTE ACCURACY: IT IS INTENDED THAT THIS MAPPING COMPLY WITH U.S. NATIONAL MAP ACCURACY STANDARDS. HOWEVER, SUCH ACCURACY OR ANY OTHER LEVEL OF ACCURACY IS NOT GUARANTEED BY LEE COUNTY FLORIDA.

THE LAND LINE INFORMATION SHOWN HERE ON IS COMPILED FROM THE BEST AVAILABLE DATA AND DOES NOT NECESSARILY REPRESENT TRUE LAND LINE LOCATION.

DASHED CONTOURS AND UNDERLINED ELEVATIONS INDICATE STANDARD VERTICAL ACCURACY REDUCED BY HEAVY FOLIAGE COVER.

GRIDS BASED ON FLORIDA STATE PLANE COORDINATE SYSTEM WEST ZONE.

ELEVATIONS BASED ON USC&G S DATUM.



300 0 300 600 900

SCALE 1" = 300' CONTOUR INTERVAL 1'

DATE OF PHOTOGRAPHY NOV. 80
DATE OF MAPPING JAN. 81

U. S. D. A.
SOIL CONSERVATION SERVICE

SECTION II T 43 S R 25 E

11-43-25