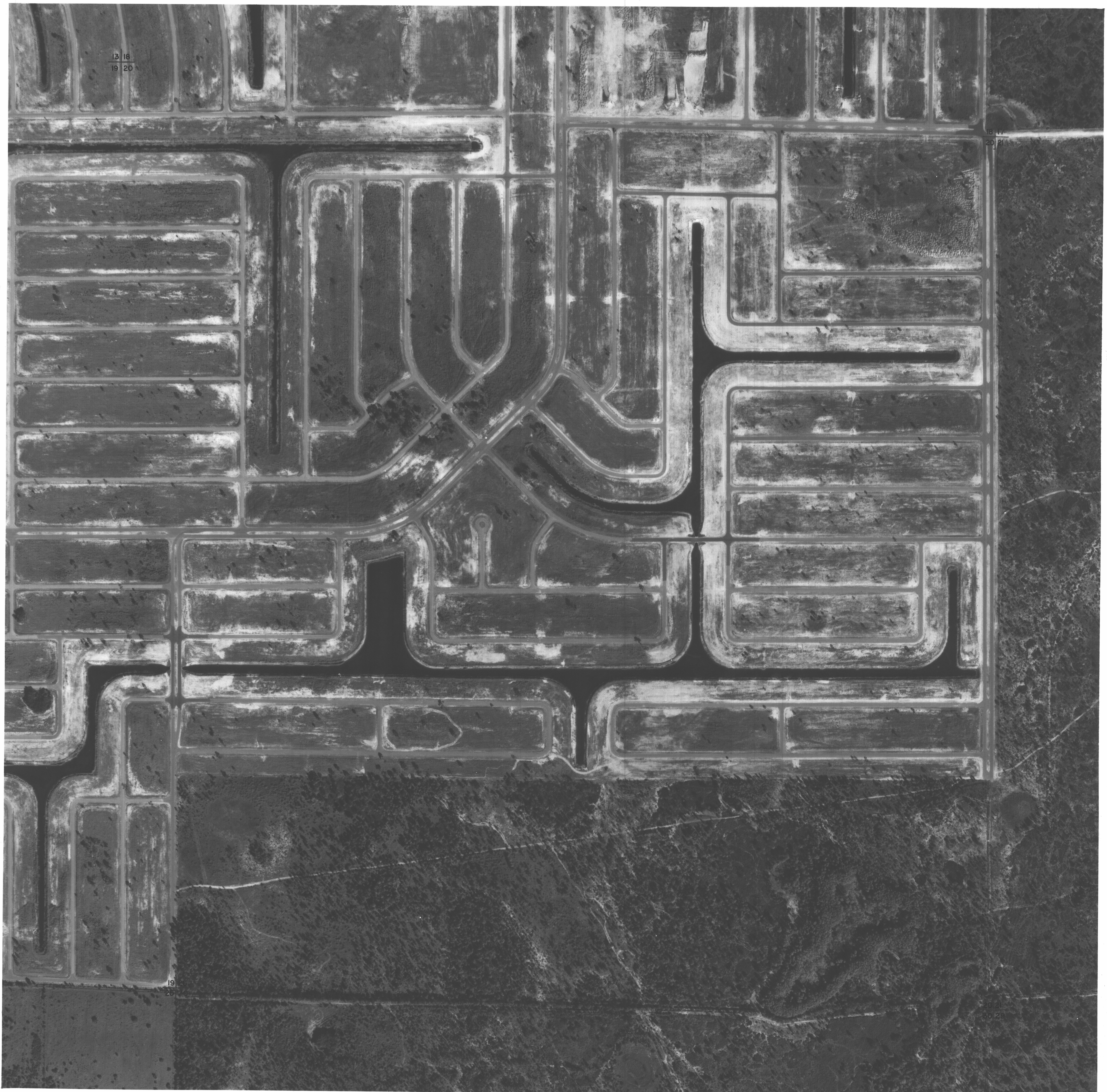


13 18  
19 20



NOTE: LAND LINE INFORMATION IS BASED ON BEST AVAILABLE DATA AND DOES NOT CONSTITUTE A WARRANTY OF LOCATION. ACCURACY REGARDING SCALE AND SECTIONAL CORNER LOCATION IS NOT GUARANTEED BY LEE COUNTY, FLA.

Prepared by  
**KUCERA**  
& ASSOCIATES, INC.  
Photogrammetric Consultants  
14000 N. W. 27th Ave., Suite 200  
Miami, Florida 33170  
(305) 551-1111

SCALE 1" : 300'

LEE COUNTY, FLORIDA



SECTION-20  
TOWNSHIP-43S  
RANGE-24E