

COMPILED BY PHOTOGRAMMETRIC METHODS

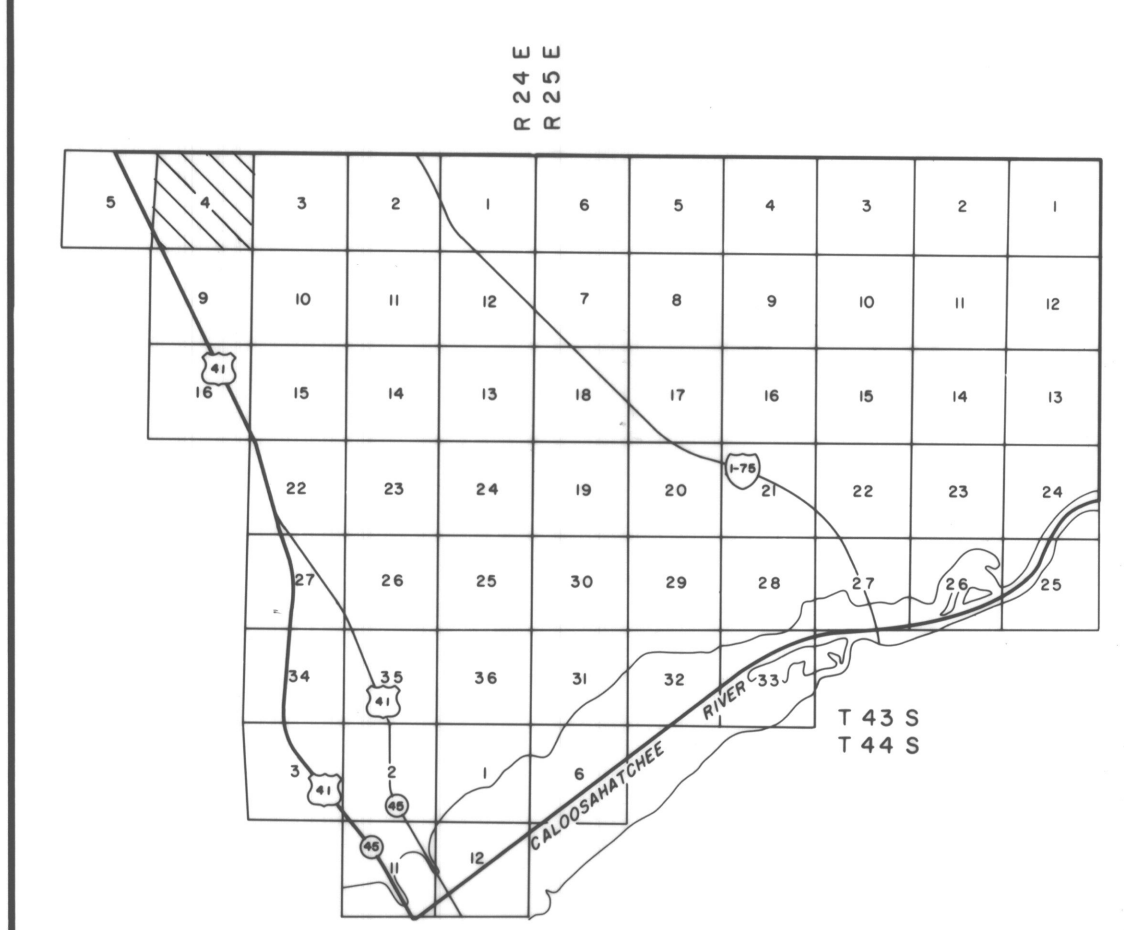
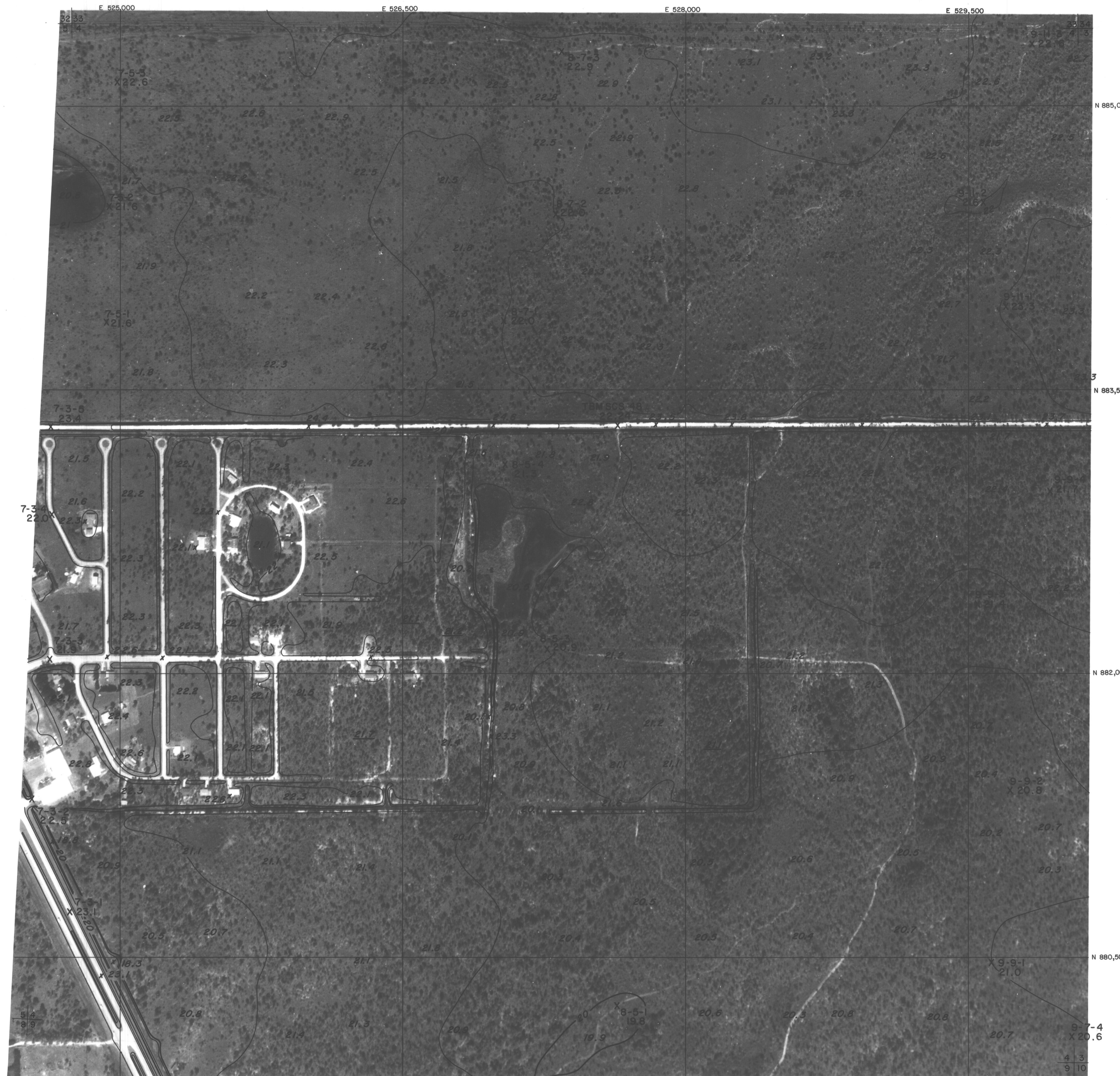
BY
HAMRICK • Aerial Surveys, Inc.



CLEARWATER FLORIDA

LEGEND

- HORIZONTAL CONTROL U.S.C.&G.S. △
- TRAVERSE STATIONS 4-5-2 ○
- VERTICAL CONTROLS 9.13 X
- SECTION CORNERS 2 | 1
- CONTOURS || 12
- DEPRESSION CONTOURS 5
- SPOT ELEVATIONS 10
- T. B. M. 12.5
- T. B. M. TBM X
- T. B. M. 7.2



NOTE
 ACCURACY: IT IS INTENDED THAT THIS MAPPING COMPLY WITH U.S. NATIONAL MAP ACCURACY STANDARDS. HOWEVER SUCH ACCURACY OR ANY OTHER LEVEL OF ACCURACY IS NOT GUARANTEED BY LEE COUNTY FLORIDA.



THE LAND LINE INFORMATION SHOWN HERE ON IS COMPILED FROM THE BEST AVAILABLE DATA AND DOES NOT NECESSARILY REPRESENT TRUE LAND LINE LOCATION.

DASHED CONTOURS AND UNDERLINED ELEVATIONS INDICATE STANDARD VERTICAL ACCURACY REDUCED BY HEAVY FOLIAGE COVER.

GRIDS BASED ON FLORIDA STATE PLANE COORDINATE SYSTEM WEST ZONE.

ELEVATIONS BASED ON USC&G.S. DATUM.



DATE OF PHOTOGRAPHY NOV 80
 DATE OF MAPPING MARCH 81

U. S. D. A.
 SOIL CONSERVATION SERVICE

SECTION 4 T 43 S R 24 E

4-43-24