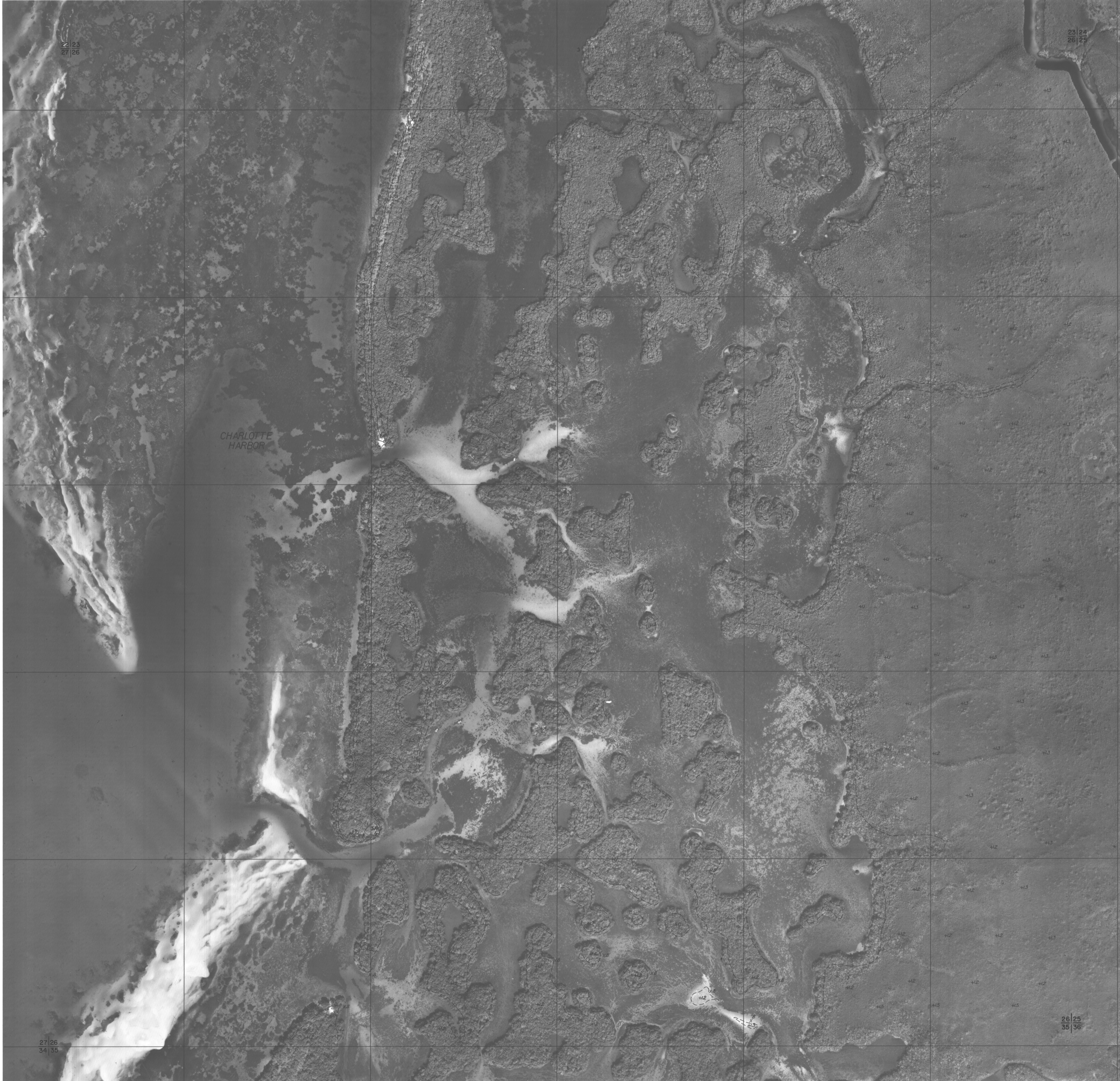


E 628,000 E 629,000 E 630,000 E 631,000 E 632,000 E 633,000



COMPILED BY PHOTOGRAMMETRIC METHODS

WOOLPERT CONSULTANTS

DAYTON & CINCINNATI, OHIO CHARLOTTE, NORTH CAROLINA
MOBILE, ALABAMA ORLANDO & PENSACOLA, FLORIDA

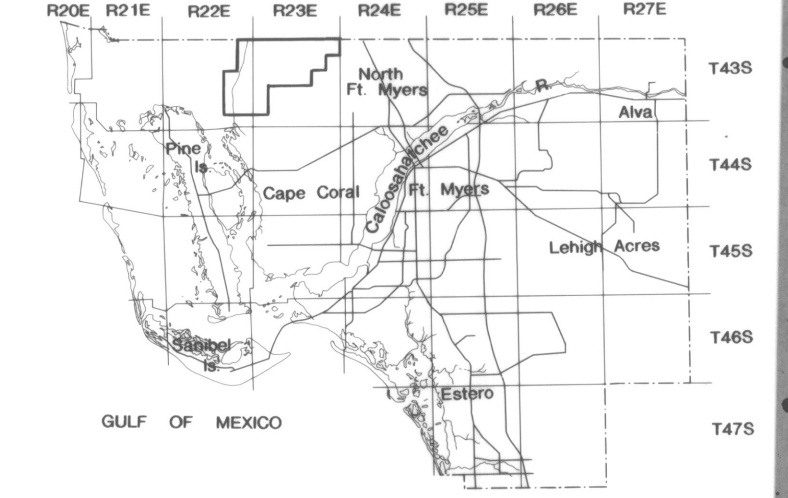
GEODETIC CONTROL SURVEY BY

Deni Associates
FT. MYERS, FLORIDA

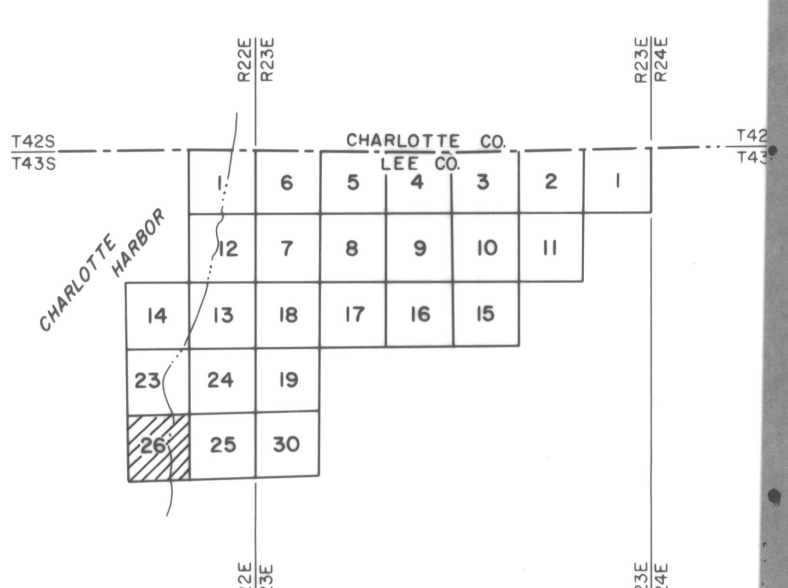
LEGEND

- HORIZONTAL CONTROL U.S.C.&G.S.
- FLORIDA STATE DEPT. OF TRANSPORTATION
- TRAVERSE STATIONS
- VERTICAL CONTROLS
- SECTION CORNERS
- CONTOURS
- DEPRESSION CONTOURS
- SPOT ELEVATIONS
- STATE ROUTE
- U.S. ROUTE
- INTERSTATE HIGHWAY
- POLITICAL BOUNDARIES

LOCATION MAP



KEY MAP



NOTE:

ACCURACY: THIS MAPPING IS INTENDED TO COMPLY WITH NATIONAL MAP ACCURACY STANDARDS. HOWEVER, SUCH ACCURACY, OR ANY OTHER LEVEL OF ACCURACY, IS NOT GUARANTEED BY LEE COUNTY, FLORIDA.

THE LAND LINE INFORMATION SHOWN IS COMPILED FROM THE BEST AVAILABLE DATA AND DOES NOT NECESSARILY REPRESENT TRUE LAND LINE LOCATION.

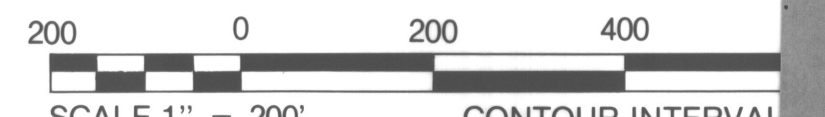
DASHED CONTOURS AND SPOT ELEVATIONS SHOWN WITH 'x' SYMBOL INDICATE THAT THE STANDARD VERTICAL ACCURACY IS REDUCED BY TREE COVER.

THIS SHEET MAY NOT BE REPRODUCED, IN PART OR IN FULL, WITHOUT SPECIFIC APPROVAL OF THE DIVISION OF LAND INFORMATION SYSTEMS, LEE COUNTY, LEE COUNTY COURTHOUSE, 2115 SECOND STREET, FT. MYERS, FLORIDA.

COPYRIGHT BY LEE COUNTY, FLORIDA. ALL RIGHTS RESERVED.

GRIDS BASED ON THE FLORIDA STATE PLANE COORDINATE SYSTEM, WEST ZONE - NAD 83.

ELEVATIONS BASED ON U.S.C.&G.S. DATUM.



SCALE 1" = 200' CONTOUR INTERVAL

DATE OF BASE PHOTOGRAPHY FEBRUARY 1988

DATE OF MAPPING PHOTOGRAPHY FEBRUARY 1988

LEE COUNTY
FT. MYERS, FLORIDA

**LAND INFORMATION
SYSTEMS**

SECTION 26 TOWNSHIP 43 SOUTH RANGE 22 EAST

DRAWING NUMBER SHEET OF

26-43-22