

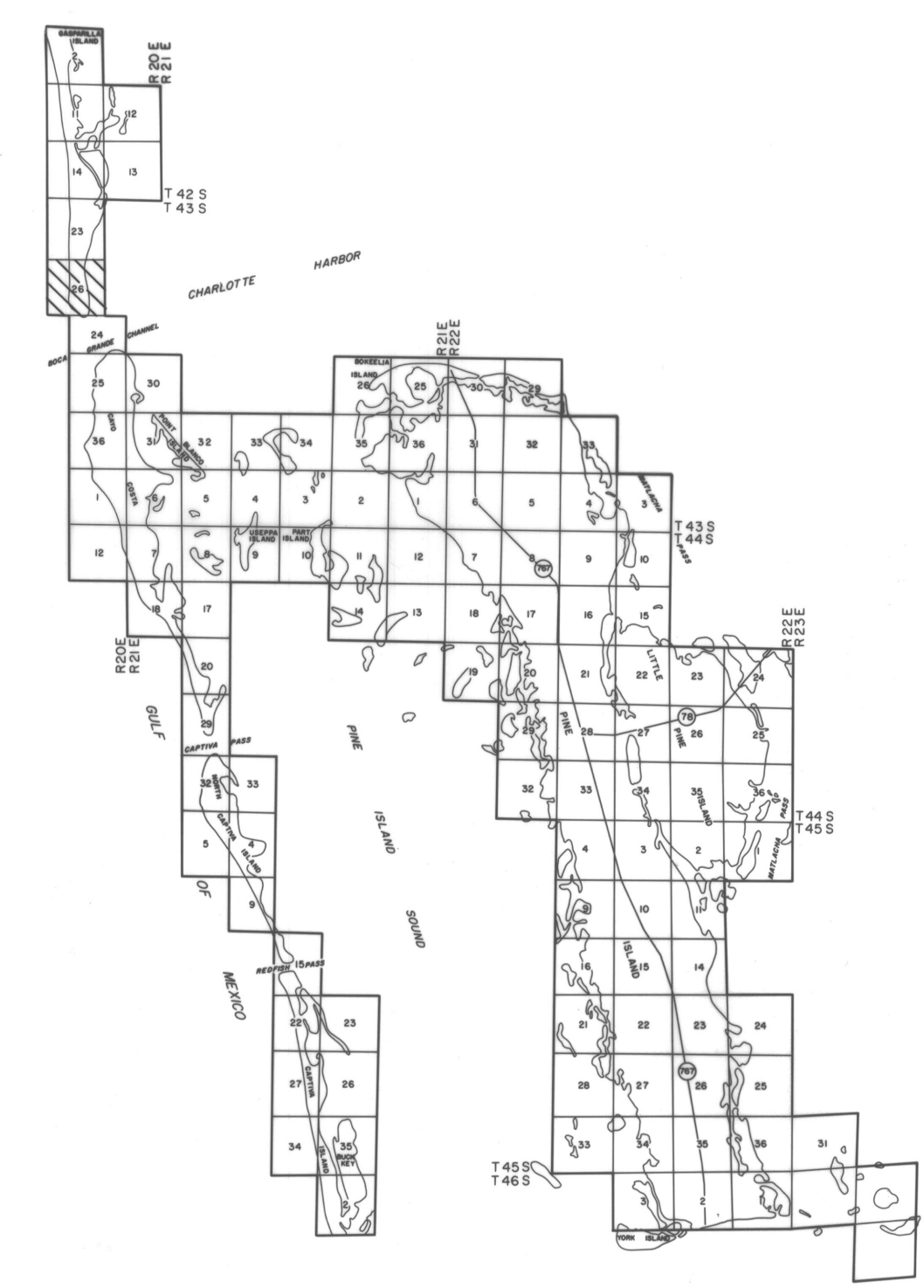
COMPILED BY PHOTOGRAMMETRIC METHODS
BY
HAMRICK • Aerial Surveys, Inc.



CLEARWATER FLORIDA

LEGEND

| | |
|---------------------|------------------|
| HORIZONTAL CONTROL | △ |
| TRAVERSE STATIONS | 4-5-2 ○ |
| VERTICAL CONTROLS | 9.13 X |
| SECTION CORNERS | 2 1 11 12 |
| CONTOURS | 5 10 15 |
| DEPRESSION CONTOURS | 15 |
| SPOT ELEVATIONS | 12.5 |
| T. B. M. | TBM X 7.2 |



NOTE ACCURACY: IT IS INTENDED THAT THIS MAPPING COMPLY WITH U.S. NATIONAL MAP ACCURACY STANDARDS. HOWEVER, SUCH ACCURACY OR ANY OTHER LEVEL OF ACCURACY IS NOT GUARANTEED BY LEE COUNTY, FLORIDA.

THE LAND LINE INFORMATION SHOWN HERE ON IS COMPILED FROM THE BEST AVAILABLE DATA AND DOES NOT NECESSARILY REPRESENT TRUE LAND LINE LOCATION.

DASHED CONTOURS AND UNDERLINED ELEVATIONS INDICATE STANDARD VERTICAL ACCURACY REDUCED BY HEAVY FOLIAGE COVER.

GRIDS BASED ON FLORIDA STATE PLANE COORDINATE SYSTEM WEST ZONE.

ELEVATIONS BASED ON U.S.C. 805 DATUM.



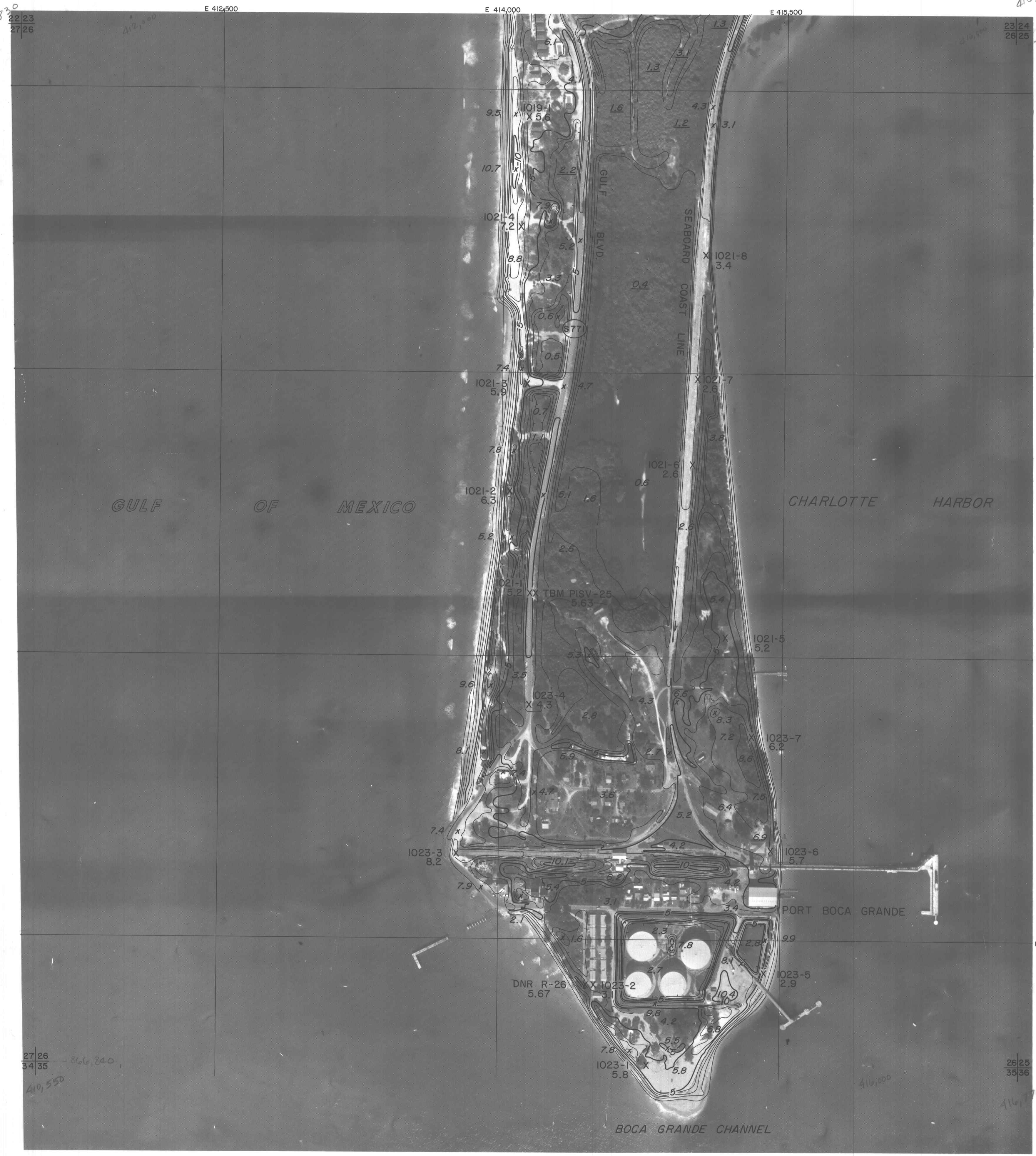
SCALE 1" = 300' CONTOUR INTERVAL 1'

DATE OF PHOTOGRAPHY 7 FEB 81
DATE OF MAPPING OCT 81

LEE COUNTY
FLORIDA

SECTION 26 T 43 S R 20 E

26-43-20



411,925
871,830
22 23
27 26

416,710
71,830
23 24
28 25

27 26
34 35
866,840

28 25
35 36
866,840

410,600

410,550

414,700

414,700